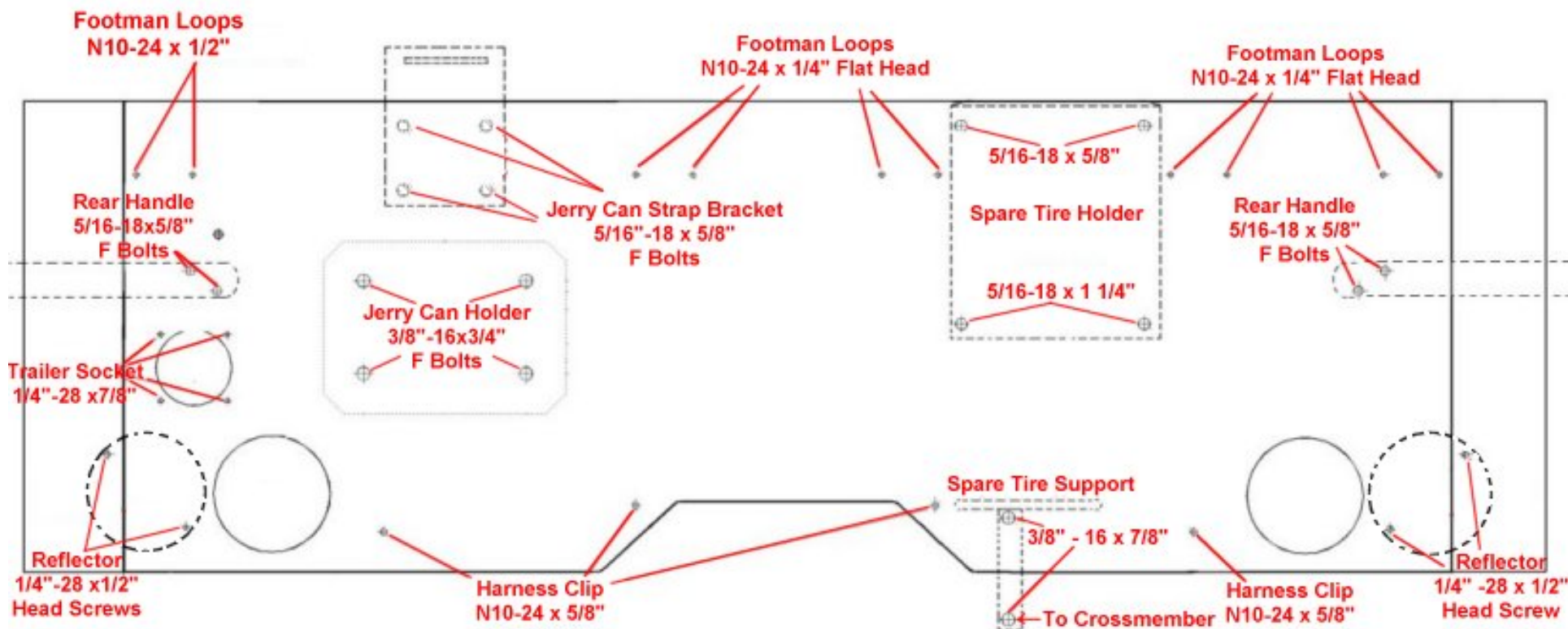


Rear Panel Bolts



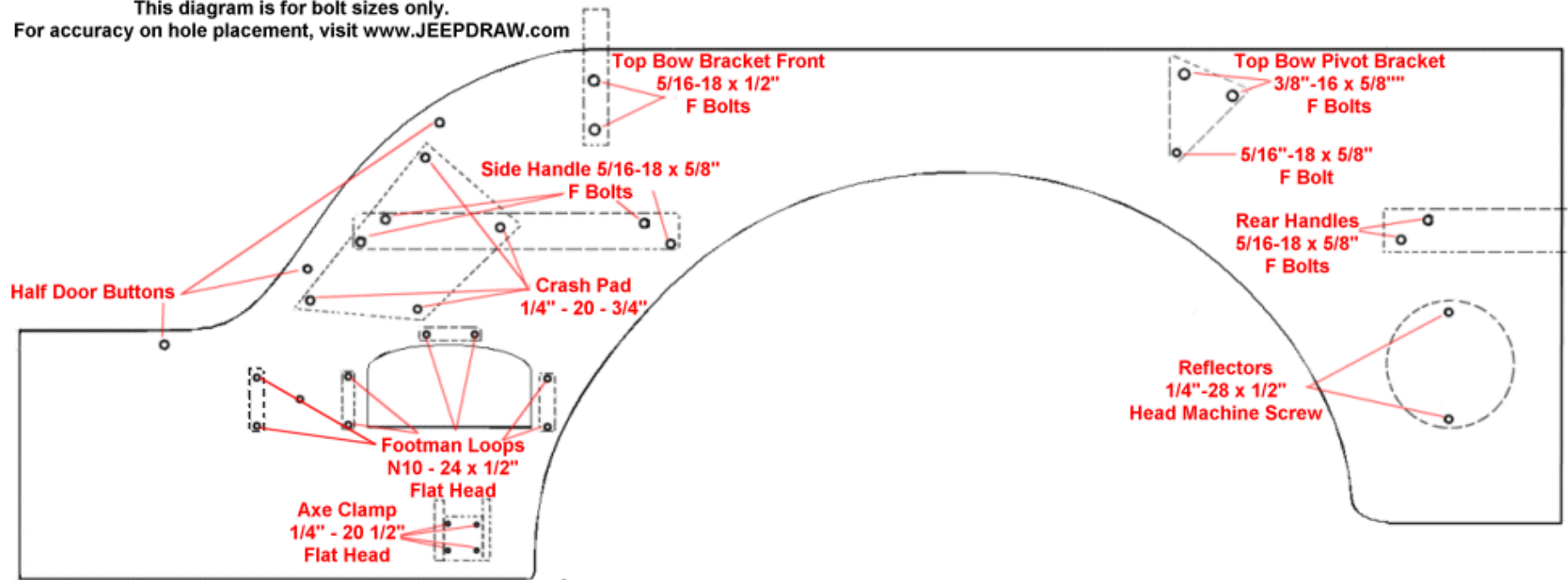
This diagram is for bolt sizes only.

For accuracy on hole placement, visit www.JEEPDRAW.com

www.1945gpw.com

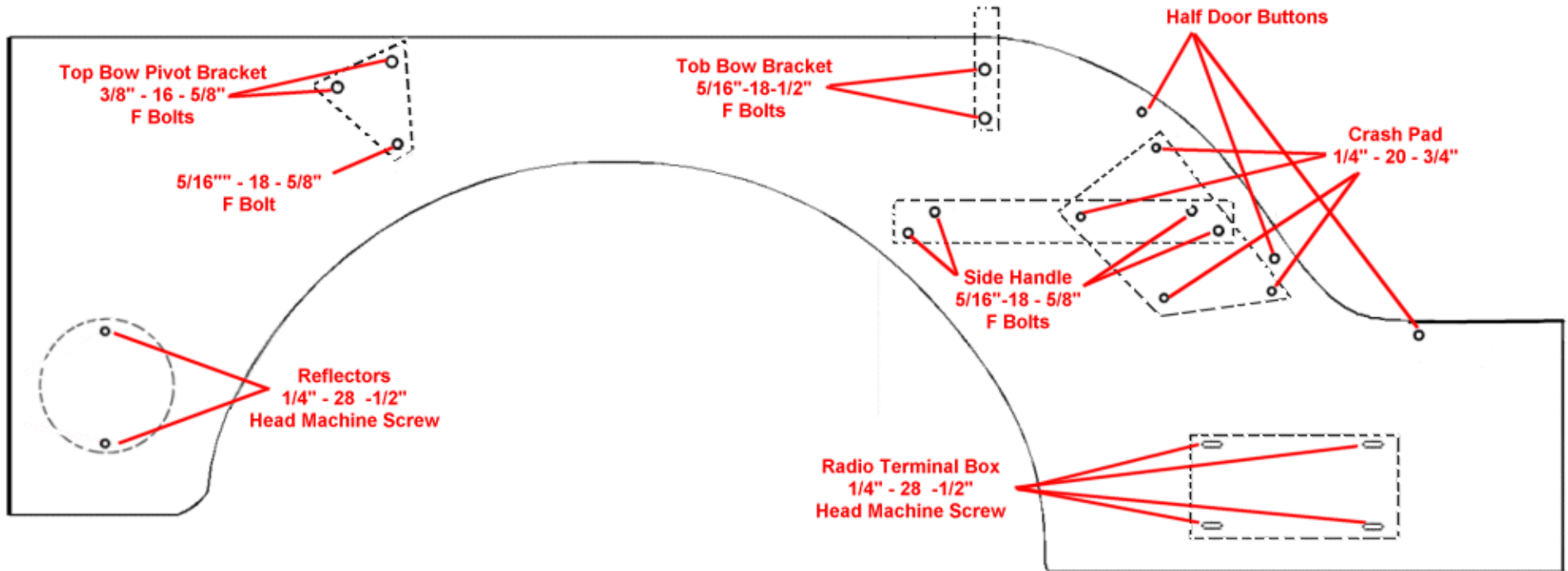
Driver Side Rear Panel

This diagram is for bolt sizes only.
For accuracy on hole placement, visit www.JEEPDRAW.com

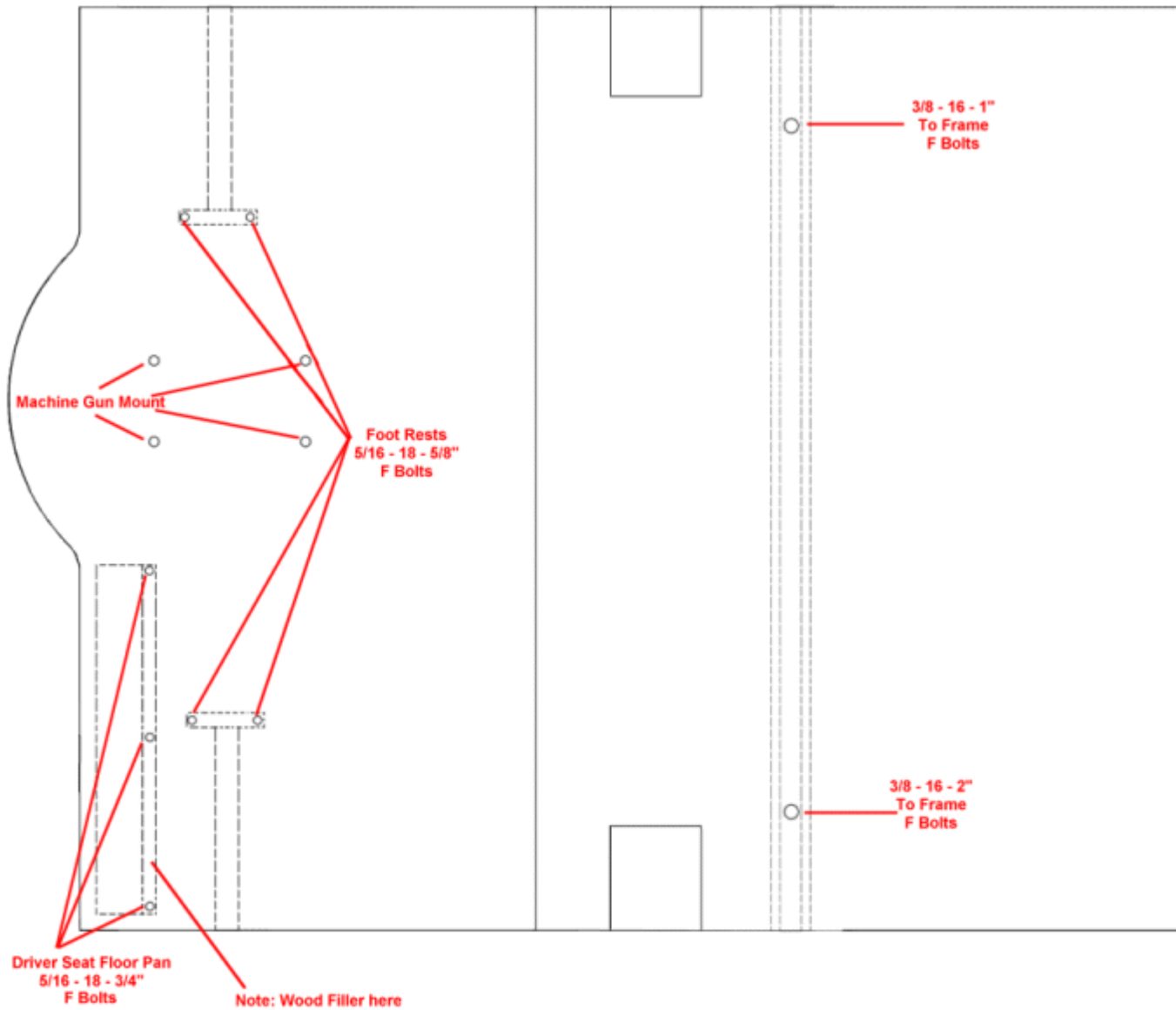


Passenger Side Rear Panel

This diagram is for Bolt sizes only.
For accuracy on hole placement, visit [www..JEEEDRAW.com](http://www.JEEDRAW.com)



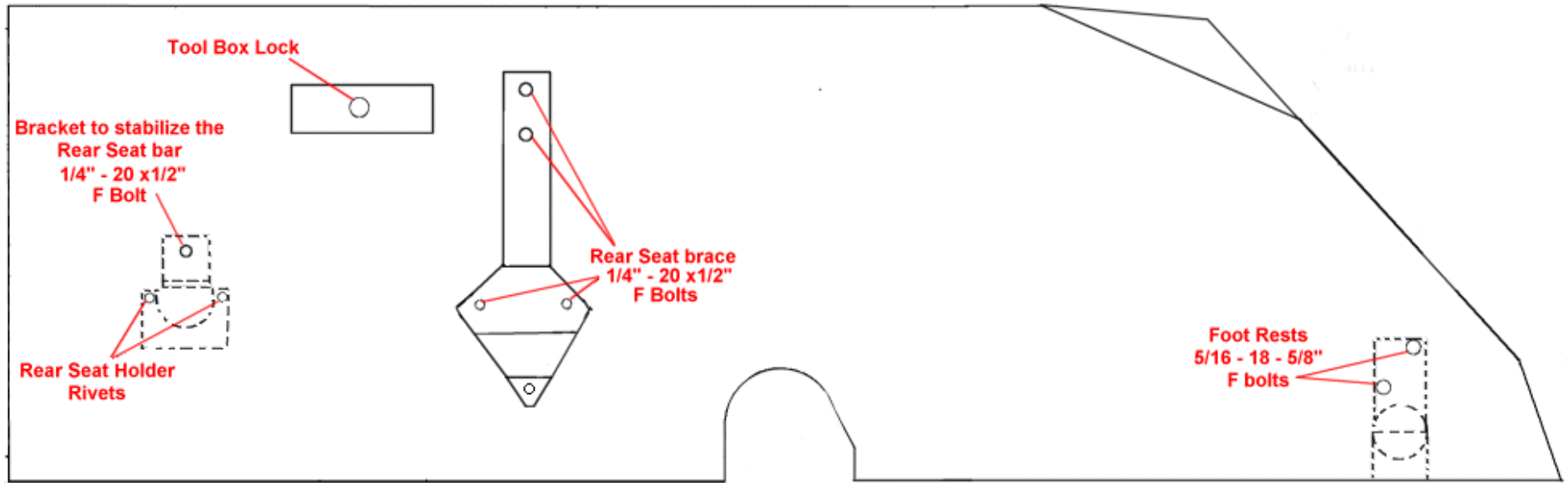
Rear Floor Panel



This diagram is for Bolt sizes only.
For accuracy on hole placement, visit www.JEEDRAW.com

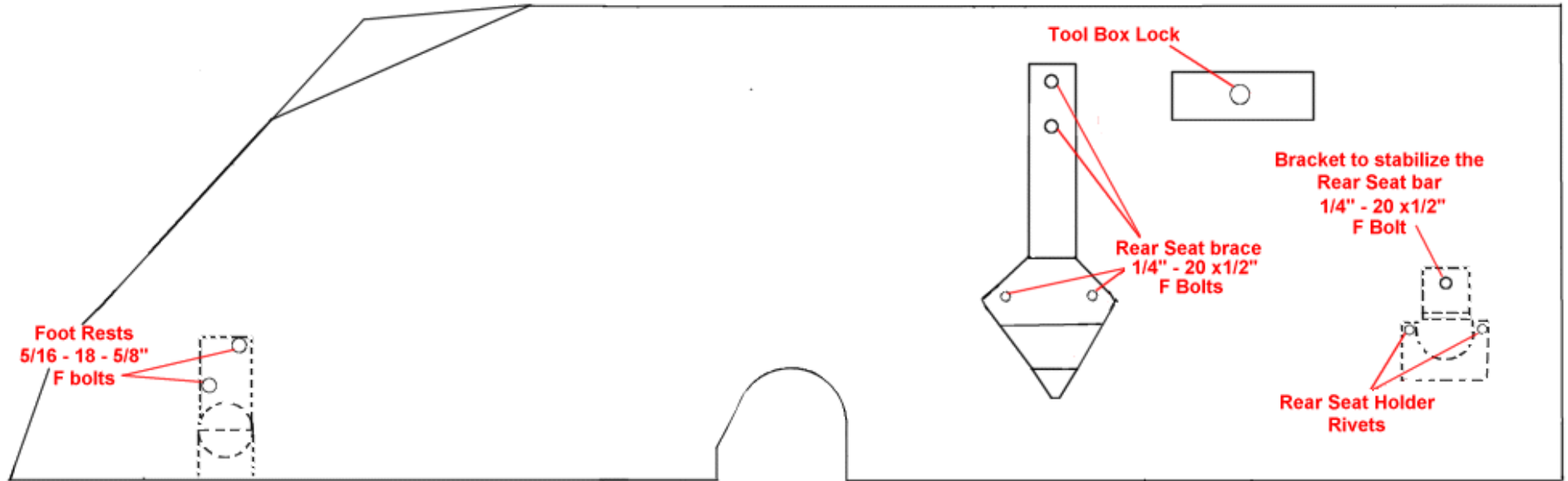
Driver Side Wheel Well

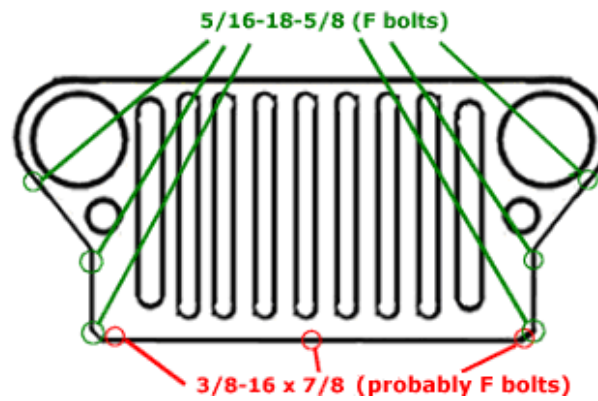
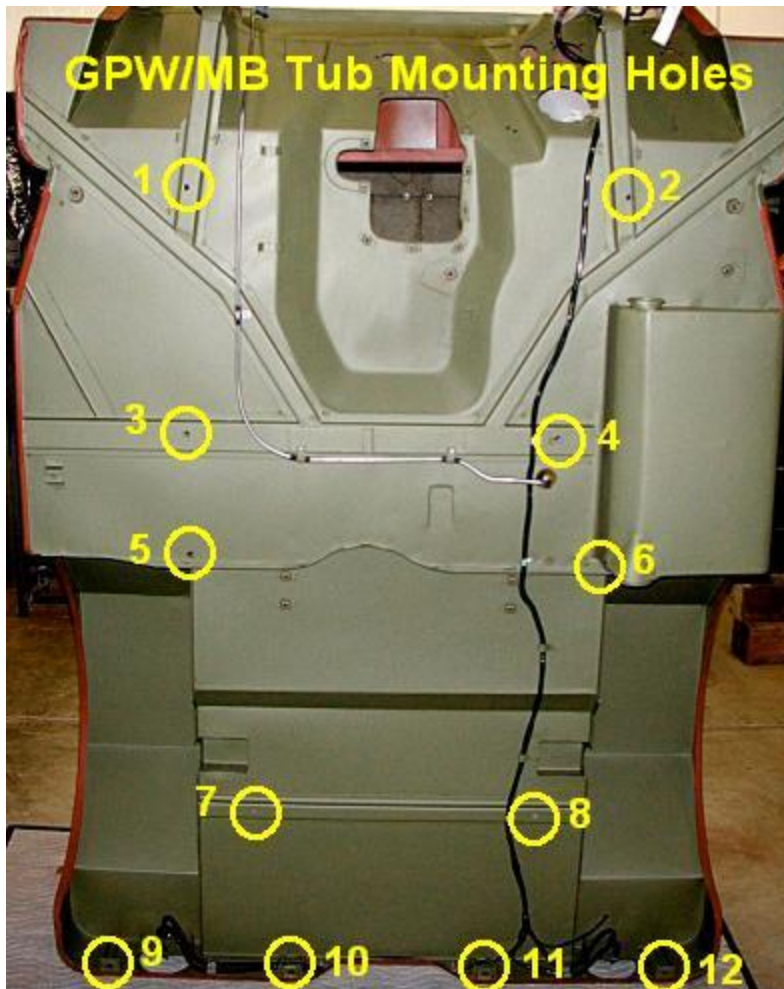
This diagram is for Bolt sizes only.
For accuracy on hole placement, visit [www..JEEPDRAW.com](http://www.JEEPDRAW.com)



Passenger Side Wheel Well

This diagram is for Bolt sizes only.
For accuracy on hole placement, visit [www..JEEPDRAW.com](http://www.JEEPDRAW.com)





as per: ORD 9 SNL G-503 (2/15/45) section 18 - pgs. 200-201

Hole #	Bolt Description	Willys #
1 & 2	Hex head 3/8-16NC x 1 3/4"	WO-51545
3 & 4	Hex head 3/8-16NC x 2"	WO-51954
5 & 6	Hex head 3/8-16NC x 1 1/4"	WO-51406
7	Hex head 3/8-16NC-2 x 2"	WO-51954
8	Hex head 3/8-16NC x 1"	WO-51405
9-12	Hex head 5/16-18NC-2 x 1 5/8"	WO-52857